

# GREELEY SCHOOL

## Problems Addressed by the April 17 Bond Referendum

“Issues & Needs sections” (from February Winnetka Board of Education *UPDATE*)

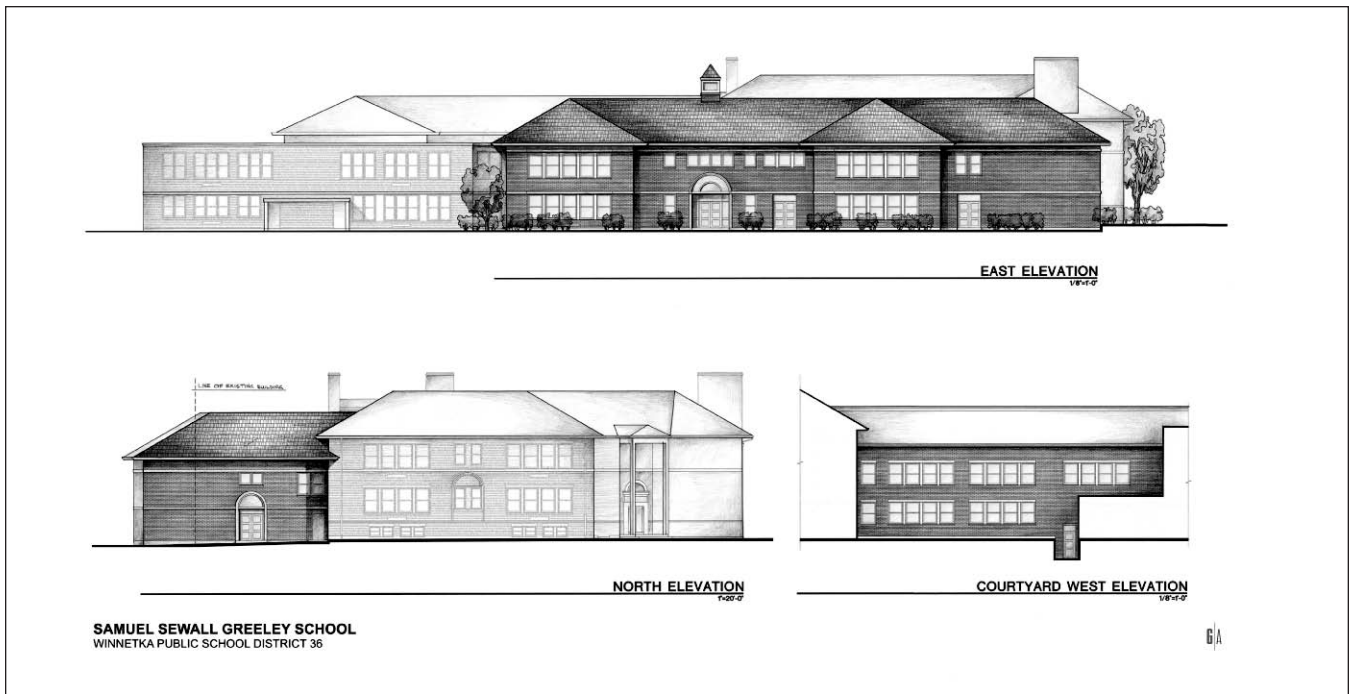
[http://www.winnetka36.org/District/boe/board\\_updates/Referendum07.pdf](http://www.winnetka36.org/District/boe/board_updates/Referendum07.pdf)

### ISSUES:

- 1950's entryway too small for security monitor/ waiting area
- Not ADA (handicapped) accessible due to multiple levels within building
- Some significantly undersized classrooms
- Special Education classrooms particularly cramped
- Auditorium has become classroom space: last year for the music class, this year for special education. Limits how and when auditorium can be used.
- Basement lunch area shared with Spanish
  - Too small for demand; 1st graders eat in classrooms
  - Can't use as multipurpose room without disturbing Spanish

### PLAN:

- Remove the 1960's Resource Center one-story addition and replace with a two-story addition, closely matching the 1913 architectural style. The structure would not encroach into the playground, and would retain the “Willoughby Woods” courtyard. Addition would include: Multipurpose/ Kinetic Wellness/lunchroom space/Spanish classroom/ Special Education classroom/ Music classroom/NSSD classroom
- Restore the original corner entryway, transforming very undersized classrooms into administrative office space.
- Establish ADA accessibility to first floor.
- Convert current office and teachers' work room to appropriately-sized classrooms.
- Move teachers' work room to former lunch/Spanish room in basement



## SCHOOL TOURS

Winnetka School Board Members will conduct facility tours and answer questions about the upcoming referendum on

**Saturday, April 14** – Greeley School 12:00 P.M.-2:00 P.M.; Washburne School 3:00 P.M.-5:00 P.M.

**Sunday, April 15** – Washburne School 12:00 P.M.-2:00 P.M.; Greeley School 3:00 P.M.-5:00 P.M.

(For more information go to <http://www.winnetka36.org/> and click on Referendum/Facilities Review.)

# WASHBURNE SCHOOL

## Problems Addressed by the April 17 Bond Referendum

“Issues & Needs sections” (from February Winnetka Board of Education *UPDATE*)

[http://www.winnetka36.org/District/boe/board\\_updates/Referendum07.pdf](http://www.winnetka36.org/District/boe/board_updates/Referendum07.pdf)

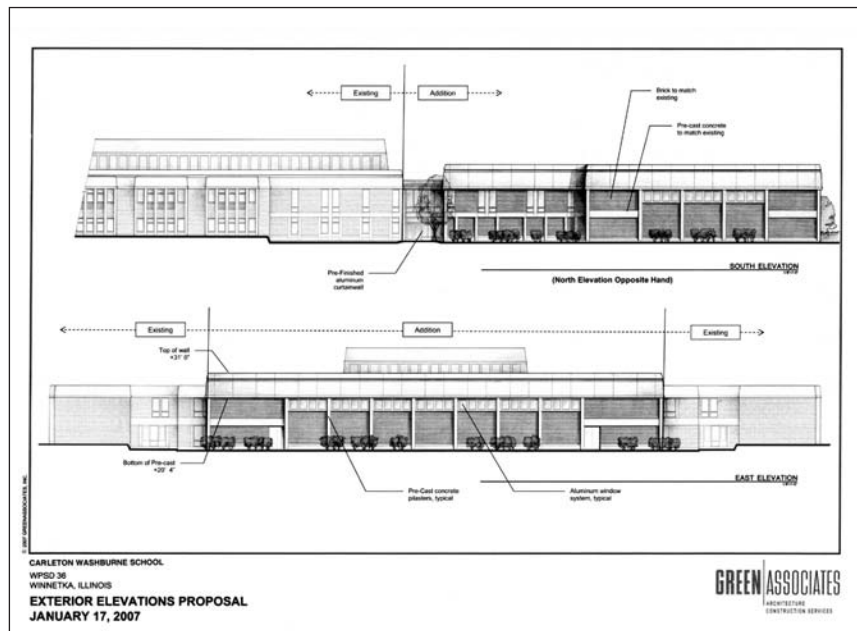
### ISSUES:

- School entryway is at far side of raised courtyard in interior of school complex, creating significant security and ADA accessibility problems.
- Significantly undersized science classrooms for current lab-based curriculum.
- Increased demand for foreign language instruction. Two classrooms in 1969 plan; now need four.
- Gyms are about half the recommended size, posing safety and program issues. Need one more gym space and classroom to meet enrollment demand, curriculum needs, state regulations.
- Shortage of Special Education classrooms. Washburne had one small room to house its one Special Education teacher in 1969. Today there are 18 Special Education staff members servicing approximately 100 children.
- Orchestra and Band, in which almost one quarter of the student body participates, has limited access to shared spaces. Practice rooms have been taken for other uses; instrument storage crowds the cafeteria.
- Little Theatre seats 350; Washburne has 479 students and 71 staff members, restricting opportunities for important all-school activities, speakers and performances.
- Conference rooms and storage space have been converted to offices and Special Education rooms. Shower rooms, stairwells, hallways, lunchroom are routinely used for storage.
- The enrollment bulge in current 2nd and 4th grade classes will force a space crisis.

### PLAN:

- Construct addition on the east side, extending approximately as far as the outdoor basketball courts. The addition would include:
  - Two academic classrooms
  - NSSD classroom
  - Multipurpose gymnasium that accommodates all-school gatherings and is divisible into three separate areas, each the size of a basketball court. Soundproof dividers, portable stands and moveable stage make the space extremely flexible.
  - Boys and Girls locker rooms
  - Cardio room
  - The gymnasium and locker rooms for sports programs would be accessible during non-school hours from north parking lot.
- Construct new entry and office area over existing plaza, providing critical building security and accessibility for disabled students and visitors.
- Renovate existing gyms, creating Band and Orchestra rooms, and four full-size science labs
- Renovate current science rooms for Special Education and other subjects
- Convert current locker rooms to practice rooms, storage and office spaces.
- This space plan is flexible enough to accommodate the coming enrollment bulge:

kinetic wellness, foreign language and elective classrooms can be used for core curriculum when the student population spikes.



## SCHOOL TOURS

Winnetka School Board Members will conduct facility tours and answer questions about the upcoming referendum on

**Saturday, April 14** – Greeley School 12:00 P.M.-2:00 P.M.; Washburne School 3:00 P.M.-5:00 P.M.

**Sunday, April 15** – Washburne School 12:00 P.M.-2:00 P.M.; Greeley School 3:00 P.M.-5:00 P.M.

(For more information go to <http://www.winnetka36.org/> and click on Referendum/Facilities Review.)